

# WELCOME TO WESTPOINT HARBOR

## VENDORS WITH BOATS IN WETSLIPS:

The team here at Westpoint Harbor are looking forward to your arrival for the Pacific Sail and Power Boat Show. Here are the details for your arrival by boat or by land:

## TIDES AND ARRIVAL TIMES:

Please find following the arrival dates and suggestions for arrival times taking into account the tides here at Westpoint Harbor. Please note, for those arriving at the Boat Ramp ensure you launch the boat at medium to high tide – low tide there is a drop off at the end of the concrete ramp.

### SUNDAY 12<sup>th</sup> MAY – TIDES

H 03:17AM, 8.195ft

L 11:03AM, -0.814ft

H - 06:18PM, 6.494ft

L - 11:16PM, 3.436ft

Suggested arrival time mid-high tide 3:30pm to 6:00pm (office closes at 6:00pm – we can always leave a key out but preference for boat arrivals to occur 9:00am to 6:00pm)

### MONDAY 13<sup>th</sup> MAY - TIDES

H - 04:09AM, 7.516ft

L - 11:59AM, -0.423ft

H - 07:18PM, 6.498ft

Suggested arrival time mid-high tide 3:30pm to 6:00pm

### TUESDAY 14<sup>th</sup> MAY – TIDES

L - 12:37AM, 3.335ft

H - 05:08AM, 6.828ft

L - 12:58PM, -0.058ft

H - 08:12PM, 6.595ft

Suggested arrival time mid – high tide 4:30pm – 6:00pm (office closes at 6:00pm – we can always leave a key out but preference for boat arrivals to occur 9:00am to 6:00pm)

### WEDNESDAY 15<sup>th</sup> MAY –

The Westpoint Harbor team will be installing the AB Dock and P Dock linking dock early Wednesday morning – this dock will close in the Vendors with boats coming into the west side of A Dock, Rowers dock and some of P Dock. It is possible with the tides for boats to arrive early that morning if necessary but is not our preferred option.

## DEPARTURE TIMES:

### SUNDAY 19<sup>th</sup> MAY – TIDES:

L - 04:48PM, 1.703ft

H - 10:48PM, 7.873ft

NOTE: The Boat Show is finishing late so the Westpoint Harbor team will not be moving the connection dock between A-Dock and P-Dock. Those people with slips on the outside of the basin can depart any time from 8:00pm onwards (mid tide depending on your draft)

### MONDAY 20<sup>th</sup> MAY – TIDES:

L - 05:59AM, 0.329ft

H - 11:58AM, 5.724ft

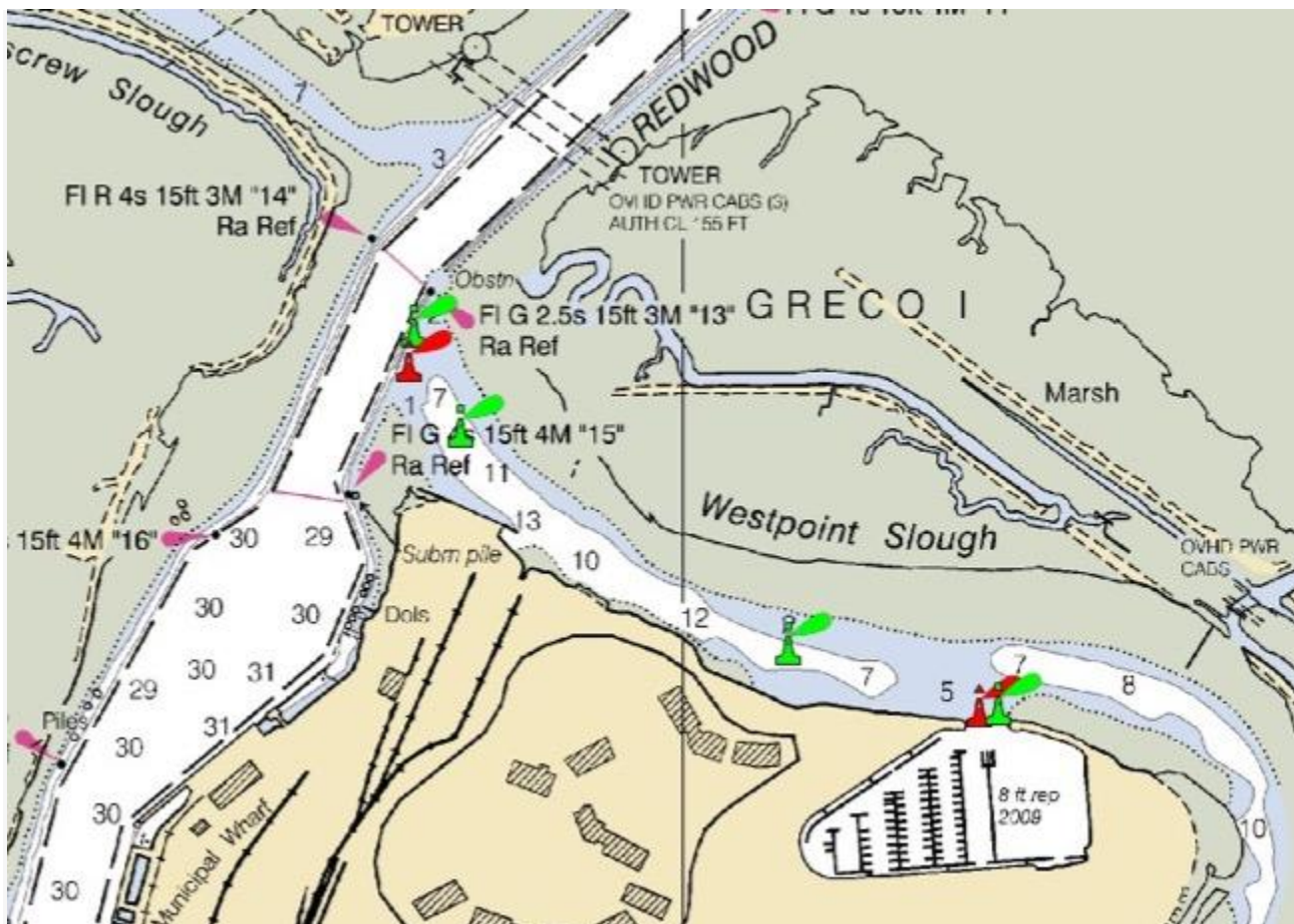
L - 05:22PM, 2.114ft

H - 11:13PM, 8.166ft

From midday onwards you can ride the tide up to North SF Bay

### ARRIVAL BY WATER:

From the North and Central Bay boaters can stay in the main deep-water shipping channel (depth of 30 feet or more), travelling southeast down the South Bay. Sailboats can expect to enjoy a beam reach which becomes a broad reach and finally a run as you pass the San Mateo Bridge—one of the best sails in the Bay. The approach to the Port of Redwood City is a right turn (back to a beam reach), and an immediate turn into Westpoint Slough after green channel marker “13”. As you make the turn, the buoys will guide you towards a concrete dock which is the deepest part of the channel. Westpoint Slough is 10’ at mean low water and red and green channel markers take you to the entrance of Westpoint Harbor which is about 1000 yards from the main shipping channel.



Estimated buoys GG and RR positions and depths for the Westpoint Slough channel, overlaid on NOAA chart. For Reference Only. Use at your own discretion. Westpoint Harbor assumes no responsibility for the accuracy of this information. Buoys may not be “on-station” due to the effects of tide and wind.

There is a video on our website showing a boat proceeding up Westpoint Slough and into Westpoint Harbor

<https://westpointharbor.com/directions-to-westpoint-harbor/>

**NOTE:** Please give our Westpoint Harbor Harbormasters an estimated day of arrival by sending an email to [harbormaster@westpointharbor.com](mailto:harbormaster@westpointharbor.com)

Please also send an email the day before arrival to **confirm your ETA**. We will keep an eye out for you on AIS/Marine Traffic. If you are not on AIS then you can either call the office on **650 701 0545** or call on **VHF 71** when you are heading up the Redwood City

We would like to catch the lines and help as much as possible when you arrive

### **ARRIVAL BY LAND – BOAT RAMP:**

For Vendors bringing boats to Westpoint Harbor on trailers and launching via Westpoint Harbor's two lane boat ramp (eastern end of the Harbor) we request you to let us know if your trailer storage needs. Please email [harbormaster@westpointharbor.com](mailto:harbormaster@westpointharbor.com) with the LOA and beam of your trailer and ETA. We will then be able to allocate you a Dry Storage space in our Boatyard and give you the necessary directions and access code.

Please refer to the notes above regarding tides. **It is important that you launch your vessel mid to high tide. The concrete boat ramp has a sharp drop off the end at low tide.**

Westpoint Harbor has wide fairways for easy maneuverability, concrete floating docks with rounded ends on the fingers. The predominant summer wind is from the NW and generally kicks in from midday onwards.

### **WOULD YOU LIKE TO ARRIVE EARLY OR KEEP YOUR BOAT HERE LONGER:**

We welcome you to stay on with us. We request you fill in a Guest Wet Slip application if you are planning on bringing your boat in outside of the dates of the Boat Show allocation of wet slips (Sunday 12<sup>th</sup> – Monday 20<sup>th</sup>). Please visit <https://westpointharbor.com/guest-slip-application/>

### **DOCK ACCESS:**

Upon your arrival, please visit the Harbor Office to pick up a key card which will give you access to the docks outside of the Boatshow hours. Access cards will be charged at \$20 each and will not need to be returned. If you wish, you can keep them for next year and we can reactivate them.

### **YOUR WET SLIP AMENITIES:**

Each wet slip has a pump-out, dockbox, dual 50AMP, 125.250 volt electrical outlets and water.

### **FUEL DOCK:**

Westpoint Harbor has a fuel dock at the Eastern end of the Harbor. We offer high quality marine grade Valvtec diesel and gasoline at very cost-effective prices. Our current price is displayed on our website [www.westpointharbor.com](http://www.westpointharbor.com).

### **FOOD, DRINKS, ICE AND SHIP STORE:**

We have a number of options for food and beverages here at Westpoint Harbor.

#### **Hurrica Bar and Restaurant**

A modern American restaurant with a live-fire culinary experience, Hurrica Restaurant & Bar is the newest waterfront dining destination in Redwood City on the San Francisco Peninsula, featuring spectacular views of Westpoint Harbor. Bookings on Open Table or first in first served deck and bar.

**LUNCH** -Wednesday-Sunday 11am-2:30pm

**BAR EVERY DAY** - Sunday 11am-8:30pm / Monday-Tuesday 5pm-8:30pm / Thursday-Saturday 11am-9:30pm

**DINNER EVERY NIGHT** - Sunday-Wednesday 5pm-8:30pm / Thursday-Saturday 5pm-9:30pm

### **H2Go Café**

Hurrica Restaurant's café is a take-out window on the north side of the building offering: Coffee, sodas, wine, beer, pastries, soft serve ice cream and the full Hurrica menu.

**OPEN:** Boat Show special hours - Sunday, May 12 - Sunday, May 19 - **9:00am-5:00pm**

### **Westpoint Harbor Ship Store**

Located in the Westpoint Harbor House, the Ship Store is open 7 days a week 9:00am – 6:00pm

Bottles of wine, beer, beverages, snacks, marine/chandlery items, gift store, apparel